

THE LAST DRINK



Elizabeth Trendowski

Mike McCabe

Presenters



- Elizabeth Trendowski - National Dram Shop/Bar Operations Expert
- Founder of S.M.A.R.T. Programs
- Invited Keynote Speaker at Industry Conferences
- National Dram Shop/Bar Operations Expert



- Michael J. McCabe, Jr., Ph.D., DABT
- Nationally-recognized , accomplished scientist with broad-based knowledge of toxic compounds and drugs emphasizing their effects on human health and performance
- Successful > 20 year academic career (medical school faculty appointments) with proven track record of achievement in research, teaching, service and scholarly productivity
- Highly qualified and effective Expert witness; 100s of cases; significant testimony experience

Drink Standardization – Alcohol Dose

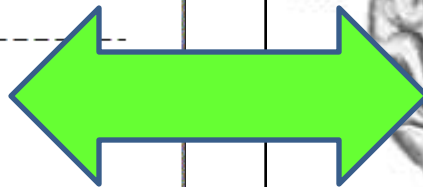
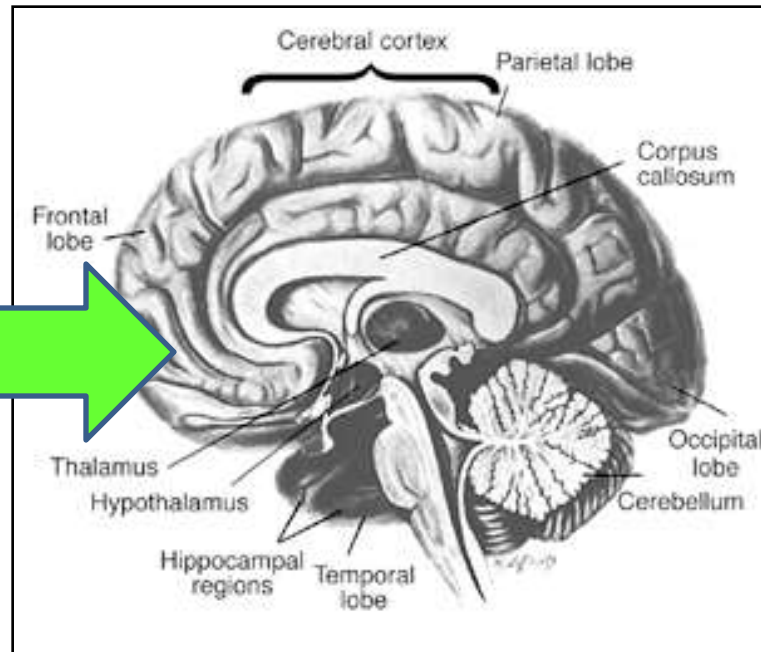
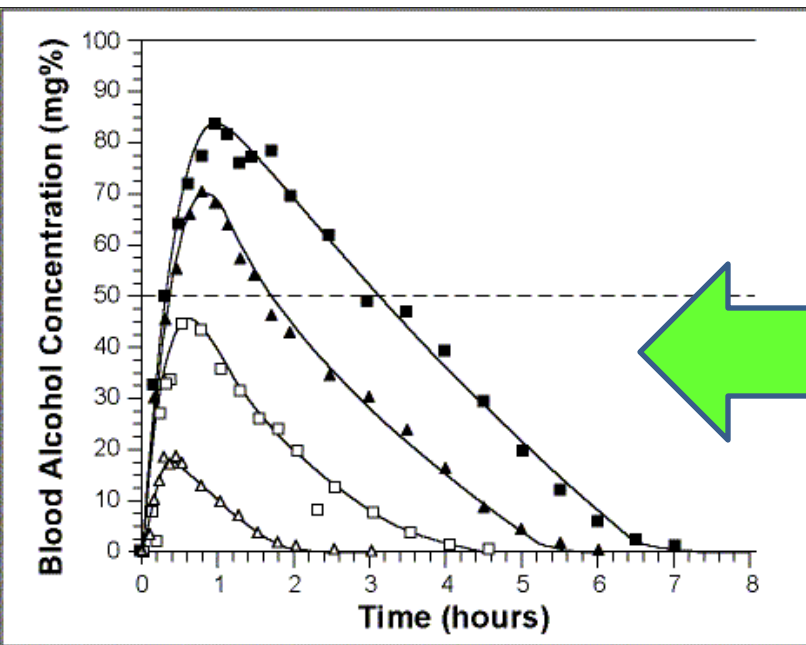


Blood Alcohol Content

Men										
Approximate Blood Alcohol Percentage										
Drinks	Body Weight in Pounds								Sample Behavioral Effects	
	100	120	140	160	180	200	220	240		
0	.00	.00	.00	.00	.00	.00	.00	.00	.00	Only Completely Safe Limit
1	.04	.03	.03	.02	.02	.02	.02	.02	.02	Impairment Begins
2	.08	.06	.05	.05	.04	.04	.03	.03	Driving Skills Significantly Affected; Information Processing Altered	
3	.11	.09	.08	.07	.06	.06	.05	.05		
4	.15	.12	.11	.09	.08	.08	.07	.06		
5	.19	.16	.13	.12	.11	.09	.09	.08		
6	.23	.19	.16	.14	.13	.11	.10	.09	Legally Intoxicated; Criminal Penalties; Reaction Time Slowed; Loss of Balance; Impaired Movement; Slurred Speech	
7	.26	.22	.19	.16	.15	.13	.12	.11		
8	.30	.25	.21	.19	.17	.15	.14	.13		
9	.34	.28	.24	.21	.19	.17	.15	.14		
10	.38	.31	.27	.23	.21	.19	.17	.16		

Pharmacokinetics and Pharmacodynamics of Alcohol

- Pharmacokinetics
 - what the body does to the drug
 - ADME
- Pharmacodynamics
 - what the drug does to the body
 - CNS depressant



Pharmacodynamic Assessment has Its Challenges



Scenario 1

Neighborhood Bar with 'Regulars'



Scenario 1

- Bar is familiar with patron
- Behavioral change cues - wider perspective
 - Inhibitions, judgment, reaction time, coordination
 - Tolerance (metabolic and functional)
- Intervention challenge
- “Regulars” as the challenge in a civil suit

Scenario 2

Nightclub with loud music, lights, dance floor



Scenario 2

- Identification of visible intoxication
- Multiple bars
- Age of patron
- Drugs
- Staff ratio (bartenders, servers, security)
- Monitoring dose/number of drinks
- Safe ride

Scenario 3

Baseball stadium with beer hawkers



Scenario 3

- Minors served with fake IDs
- Intox fan falls from seat onto lower level
- Parking lot altercations
- Driving away from stadium

Scenario 4

Sports Bar



Scenario 4

- Opportunity to identify visible intoxication
- Once identified / stopping service of alcohol
- One patron intox/others not. Stop service of alcohol to everyone?
- Patron 86'd, told to leave

Scenario 5

Chain restaurant/bar



Scenario 5

- Absorption rate factor - food
- Training /ssa/upselling
- If estab. Is a restaurant/bar, then the kitchen stays open until closing
- Written policies and procedures
- Lots of personnel turnover
- Execution of policies

Reasonable Efforts and Standard of Care

1. Industry recognized alcohol server training
2. Execution of server training
3. Ratio of 1:15 generally accepted in a busy bar
4. Hospitality industry = engage in conversation
5. Last call
6. Red flag drinks/energy drinks w alcohol

Reasonable Efforts and Standard of Care

7. Alternative transportation
8. Offer food until closing
9. Documentation of incidents
10. Proper checking of IDs
11. Continued training
12. Bartender training

Who is ultimately responsible?

Weak link? Who is it?

- Bartender
- Server
- Manager
- Permittee
- AIP
- Owner

Cheers!

- Elizabeth Trendowski
- Michael McCabe, Ph.D
- Robson Forensic, Inc.
- www.robsonforensic.com
- 1-800-813-6736

Session Evaluation



Scan or Visit TheHLC.co