

The Office of Infrastructure Protection

National Protection and Programs Directorate
Department of Homeland Security

Global Congress on Travel Risk Management

October 2, 2012



Homeland
Security

About the Presenter



- Bill Schweigart
- Program Analyst for the Department of Homeland Security Office of Infrastructure Protection, Commercial Facilities Sector Specific Agency.
- Focuses on Lodging, Entertainment & Media, Real Estate, and Cultural Properties.
- Former U.S. Coast Guard officer with a background in Continuity of Operations (COOP) planning, emergency management, and pandemic planning.

Commercial Facilities Sector

- The Commercial Facilities Sector comprises a number of diverse segments. The diversity of assets within the sector leads to a myriad of critical infrastructure activities. Facilities within this sector are generally designed for one of the following purposes:

Business Activities



Recreational Pastimes



Personal Commercial Transactions

Accommodations



Protective Security Advisors



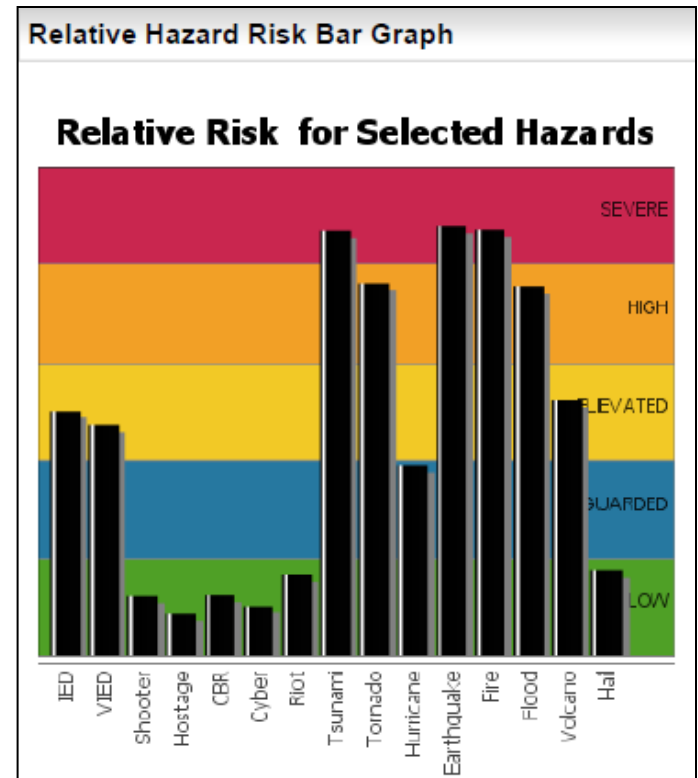
- Protective Security Advisors (PSAs) are assigned to local communities throughout the U.S. They serve as Department of Homeland Security (DHS) liaisons to the private sector and Federal, State, tribal, territorial, and local governments.
- PSAs assist in identifying critical infrastructure.
- PSAs coordinate requests by the private sector for DHS services and resources, including training requests and scheduling of Site Assistance Visits.
- For more information about the PSA Program, e-mail the Office of Infrastructure Protection at FOBAnalysts@hq.dhs.gov



**Homeland
Security**

Voluntary Assessment Programs

- Enhanced Critical Infrastructure Protection Initiative
- Infrastructure Survey Tool
- Site Assistance Visits
- Regional Resiliency Assessment Program
- Computer-Based Assessment Tool
- Risk Self-Assessment Tool



Risk Self-Assessment Tool

- A Web-based application to assist managers of facilities with the identification and management of security vulnerabilities
- Uses facility input in combination with threat and consequence estimates to conduct a comprehensive risk assessment
- Features
 - Venue Characterization
 - Threat Ratings
 - Vulnerability Assessment
- Reports
 - Self-Assessment Report
 - Benchmark Report
- RSAT is available at:
<https://rsat.anl.gov>

The screenshot displays the Risk Self-Assessment Tool (RSAT) interface. The top navigation bar includes the Homeland Security logo and the tool title. A left sidebar contains a menu with options: General, Venue Characterization, Threat Rating, Vulnerability Assessment, Hazard Selection, Vulnerability Detail, View Input Listing, Validate Report, List of Assessments, RSAT Contacts, RSAT References & Resources, and Logout. The main content area is titled 'General' and features a 'Save' and 'Next >>' button. A welcome message reads: 'Welcome to RSAT, the risk self-assessment tool designed for arenas and stadiums'. Below this, a note states: 'Review the venue information shown below. If the name or address information is incorrect or incomplete, click the Update Venue Info button.' The 'Venue Information' section contains the following fields: Venue Name (Demo Facility 1), Venue Location Address (123 Main St.), Venue Location Address (continued) (blank), Venue Location City (Argonne), Venue Location State (IL), and Venue Location ZIP Code (60439). An 'Update Venue Info' button is located below these fields, along with 'Save' and 'Next >>' buttons.

Homeland Security Information Network

- The Homeland Security Information Network – Critical Sectors (HSIN-CS) is a secure portal that provides a “peer to peer” collaboration space for members to engage in real-time.
- Each subsector has its own subportal within the Commercial Facilities portal.
- Resources available on HSIN-CS include analysis, alerts, bulletins, training, and Suspicious Activity Reporting.
- To register, e-mail: cikriseaccess@hq.dhs.gov

HSIN-CFS COMMERCIAL FACILITIES SECTOR

My Site Help Logout

CS Home Sectors DHS Document Highlights Daily OSIR Cyber Information User Information Connect

Current Location CS_Home > Sectors > Commercial Facilities

This topic

Current Location

- CS Home
- Sectors
- Commercial Facilities
 - Documents
 - Discussions
 - Sites
 - Administration

Actions

- Add Listing
- Add Person
- Upload Document
- Change Settings
- Manage Content
- Manage Portal Site
- Add to My Links
- Alert Me
- Edit Page

Toolbox

- Questions
- Contacts
- Document Library
- Videos
- Alerts
- Calendar
- Newsletter
- Training

Recently Updated Products

More than 10 results, showing items 1 - 10

Sort by Date (newest first) then group by Date | Add to My Links | Alert Me

| Type | Name | Modified | Modified by | Size |
|------------------|---|-----------|---------------------|--------|
| This week | | | | |
| | NICCC Daily Sector Pulse 03 Oct 10 | 10/4/2010 | richard.sonnenberg1 | 88 KB |
| | Current Situation Report - World Equestrian Games ... | 10/3/2010 | Jason Stoddard | 69 KB |
| | Current Situation Report - Houston Shipping Channe... | 10/3/2010 | Mark Stidd3 | 560 KB |
| | Spot Report - Houston Shipping Channel Closure - 0... | 10/3/2010 | Mark Stidd3 | 840 KB |
| | FBI-DHS Joint Intelligence Bulletin - Al-Qaida Thr... | 10/3/2010 | Daniel Abreu1 | 2 MB |
| | (UFOUO) FBI-DHS Joint Intelligence Bulletin Al-Qa'... | 10/3/2010 | Anthony Welch1 | 2 MB |
| | NICCC Daily Sector Pulse 02 Oct 10 | 10/3/2010 | Jason Stoddard | 106 KB |
| | Current Situation Report - World Equestrian Games ... | 10/3/2010 | Jason Stoddard | 68 KB |

Content Providers

- CIPAC Trade Association Members
- DHS JP Education, Training and Outreach
- Homeland Infrastructure Threat & Risk Analysis Center [HITRAC]
- TRIPwire Community Gateway
- DHS I&A Intelligence Products
- Protective Security Coordination Division CVPIPM Papers

Commercial Facilities Hot Site Links

- Commercial Facilities Sector CIKR Resources
- Sector Coordinating Council Working Group
- National Hurricane Center

TRIPWire Community Gateway

- Shares information on common site vulnerabilities, potential threat indicators, and effective protective measures.
- Provides information tailored specifically to each of the 18 critical infrastructure sectors.
- Leverages content, expertise, and reputation of existing TRIPwire system.
- Serves as the central DHS repository for private sector guidance on bombing prevention.
- Reinforces DHS commitment to partner with private sector and public to combat terrorism.

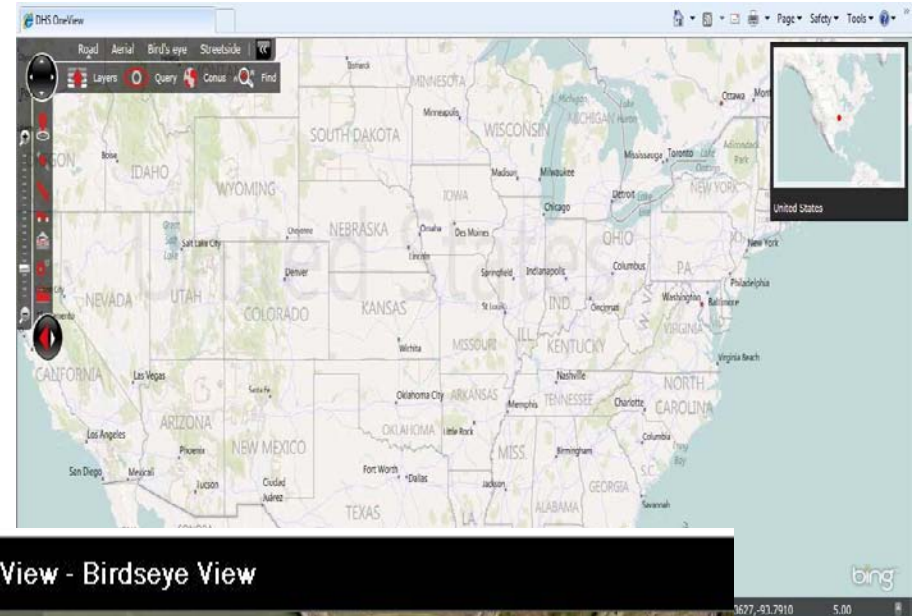
The TRIPwire Community Gateway leverages the content and expertise of the TRIPwire system, bringing peer-validated and timely bombing prevention awareness information and analysis to those in the community who share bombing prevention responsibilities.



**Homeland
Security**

DHS OneView

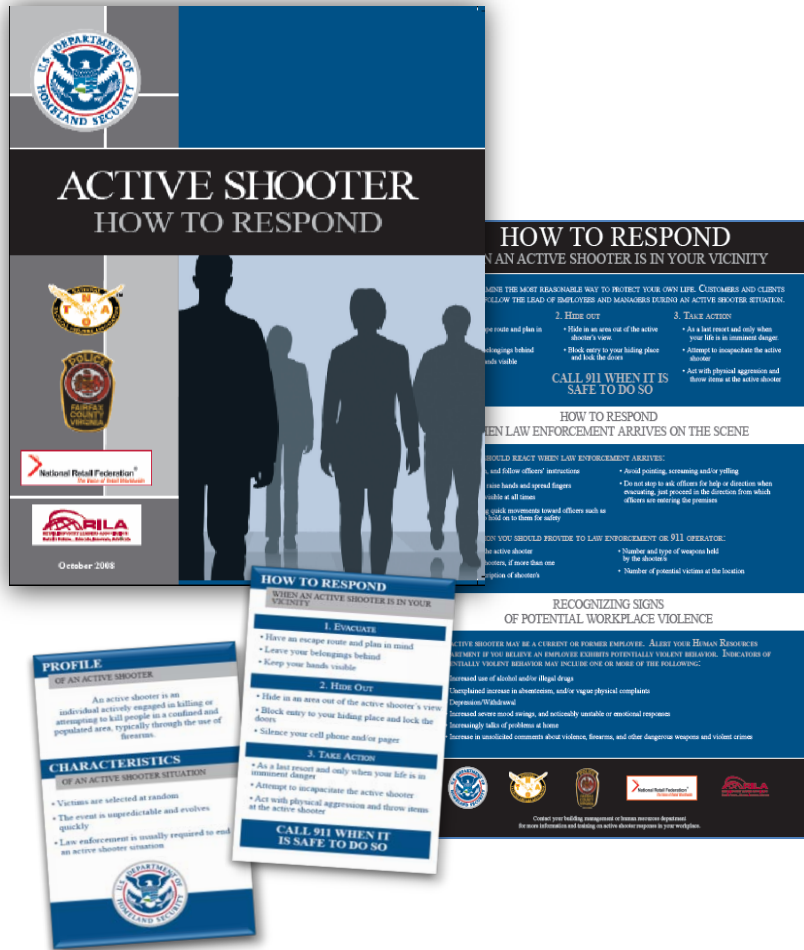
- DHS OneView is a new geospatial viewer that allows HSIN users to:
 - View and interact with data and application services within the DHS Geospatial Information Infrastructure (GII) and other sources
 - Access over 400 infrastructure data layers, including layers representing the 18 critical infrastructure and key resources (CIKR) sectors, national hazards, and base map layers.
 - Add content, measure distances, search for addresses, plot directions, and customize maps with drawing tools.



Homeland
Security

Active Shooter – How to Respond

Training & Outreach Materials



- Provide private sector partners with the tools needed to prepare and train for an Active Shooter incident
- Material consists of 3 products:
 - Basic Guide Book
 - Break Room poster
 - Pocket Emergency Measures Guide
- FEMA EMI online training: (IS-907) *Active Shooter, What You Can Do*
<http://training.fema.gov/EMIWeb/IS/IS907.asp>
- Webinar
<https://connect.hsin.gov/asaware2011>

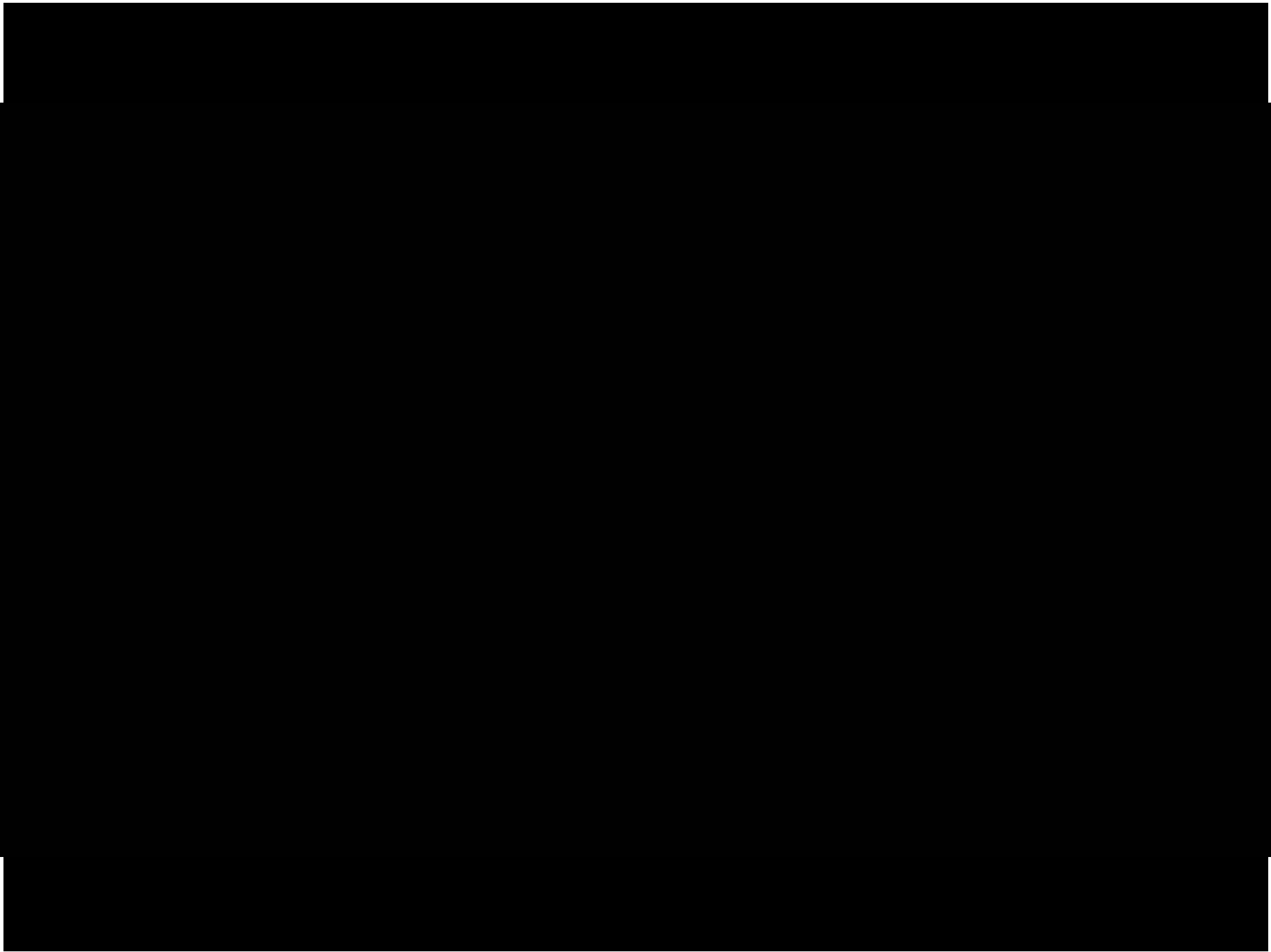
Active Shooter Workshops



- The U.S. Department of Homeland Security (DHS) is partnering with Police Departments to conduct Workshops aimed at fostering communication between facilities and their local emergency response teams in response to an active shooter event.
- This one-day facilitated seminar will focus on emergency responder and facility coordination, interoperability capabilities, communications protocols, best practices, and integration of local assets.
- For more information, e-mail cfsteam@hq.dhs.gov.



**Homeland
Security**



DHS Hotel & Lodging Advisory Poster



- Produced in collaboration with the American Hotel & Lodging Association (AH&LA)
- Provides hotels with an increased awareness of:
 - Their potential to be used for illicit purposes
 - Suspicious behavior and items
 - How to report suspicious activity
- Features:
 - Designed for “back of the house”
 - Dual-sided, with a Spanish translation
 - Dimensions: 16” x 24”



The poster features the DHS logo at the top left. The title "DHS Hotel & Lodging Advisory" is in red and black. Below it, a green banner asks "Are You Aware of Suspicious Activity?". The main text states: "Hotels and lodging facilities can be venues for criminal or terrorist activities. Be alert to any persons who behave suspiciously or engage in unusual actions; these may be indications of criminal or terrorist activity."

Suspicious Behavior:

- 🔍 Nervous or evasive guest or visitor attitudes, overly concerned with privacy.
- 🔍 Denial of access to room or refusal of room cleaning for extended stay.
- 🔍 Insistence on cash payment.
- 🔍 Attempts to gain access to restricted areas.
- 🔍 Individuals taking notes, pictures, or videos of hotel.



Suspicious Items:

- 🔍 Large amounts of unusual substances (acetone, peroxide, drain cleaner)
- 🔍 Luggage emanating fumes/odors
- 🔍 Disassembled electrical components (wires, circuit boards, batteries)
- 🔍 Plans, drawings, schematics, maps



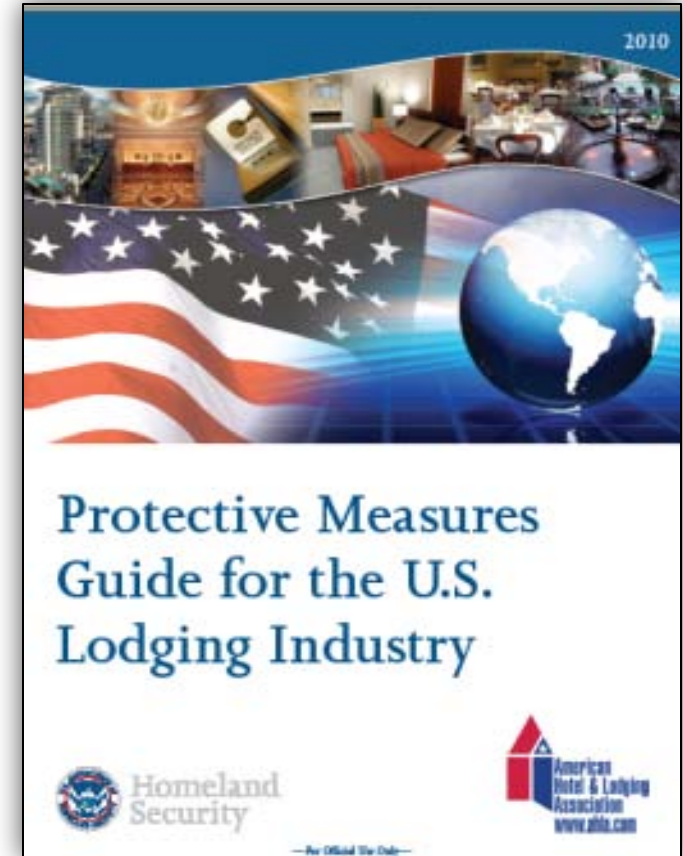
What Can You Do?

- Understand how criminals or terrorists could use your facility for their own purposes.
- Promptly alert your management and appropriate authorities when you see suspicious behavior or items, or unusual activity.
- Report something if it looks or feels wrong – security is everyone's responsibility.

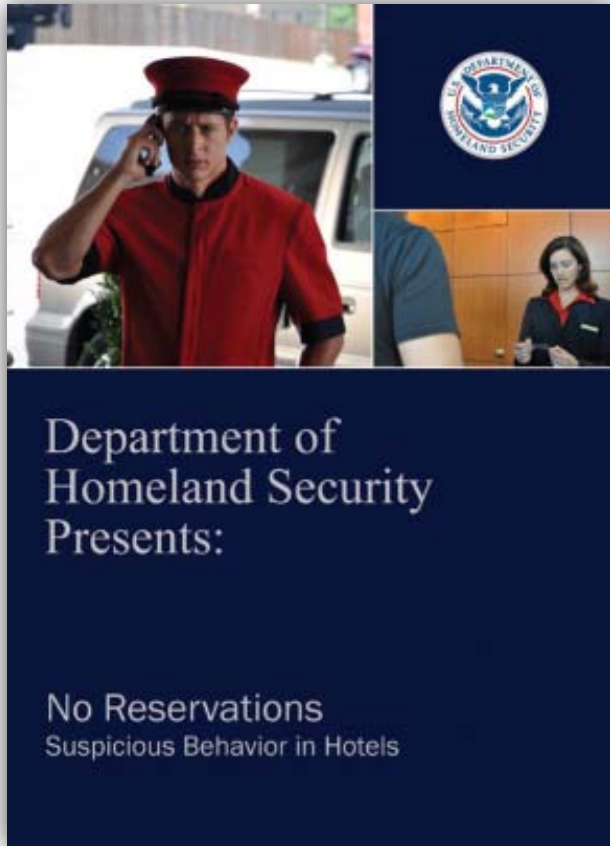
Concerned? Report your concerns to your supervisor, Security Manager, or Hotel General Manager.

Protective Measures Guide

- The *Protective Measures Guide for the U.S. Lodging Industry* was developed in collaboration with AH&LA
- Overview of threat, vulnerability, and protective measures to assist hotels in planning and managing security at their facilities
- UNCLASSIFIED//FOR OFFICIAL USE ONLY (FOUO)
- Available on the Commercial Facilities Sector portal of HSIN-CS



No Reservations: Suspicious Behavior in Hotels



- Developed in collaboration with AH&LA
- Provides information to help employees identify and report suspicious activities and threats in a timely manner
- Spanish version now available
- Both versions are available at www.dhs.gov/cfsector (streaming and downloadable)

System Assessment and Validation for Emergency Responders

- DHS System Assessment and Validation for Emergency Responders (SAVER) identifies responder equipment information needs
- Assesses commercial-off-the-shelf equipment using realistic environments and scenarios
- Provides unbiased comparative assessments

■ Products include:

- SAVER Highlight
- SAVER TechNote
- SAVER Summary
- Technical Reports

■ <https://www.rkb.us/saver/>



DHS Private Sector Resources Catalog

- Includes resources targeted for use by critical infrastructure owners and operators and more (businesses, nonprofits, nongovernmental organizations, academia)
- Consolidates information from all DHS components:
 - Training
 - Publications
 - Guidance
 - Alerts
 - Newsletters
 - Programs and Services
- Organized by resource type and includes a comprehensive index
- http://www.dhs.gov/xabout/gc_1273165166442.shtm

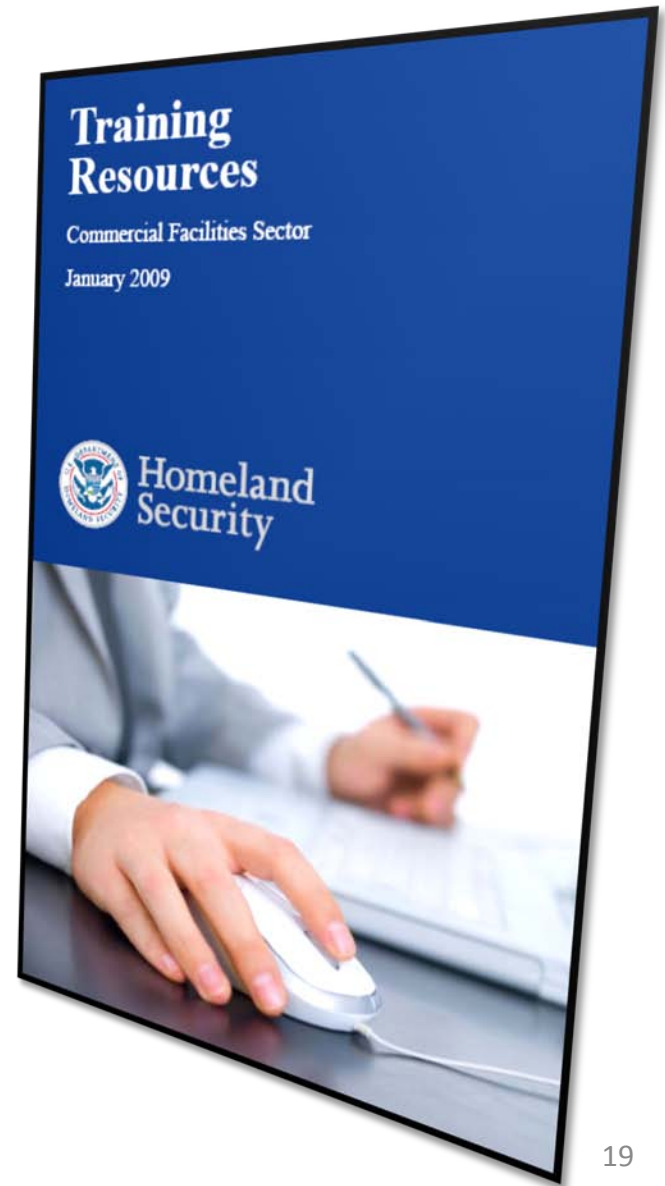
DHS Awareness Training Courses

- Training Courses
 - Surveillance Detection Training for Commercial Infrastructure Operators and Security Staff Course (3 day)
 - Protective Measures Course (2 day)
 - Bombing Prevention Workshop (1 day)
 - Private Sector Counterterrorism Awareness Workshop (1 day)
 - IED Search Procedures (1 day)
 - IED Awareness Bomb Threat Management Workshop (4 hrs)
 - Soft Target Awareness Course (4 hrs)
- For more information e-mail the Office of Infrastructure Protection at OBP@dhs.gov




Commercial Facilities Training Resources

- Courses include:
 - Terrorist Acts
 - Weapons of Mass Destruction
 - Information Security/Cybersecurity
 - Public-Private Partnerships
 - Protecting Soft Targets
 - Business Planning
 - Natural Disasters
 - Special Events
 - Hazmat
 - Exercises
 - Emergency Management/Planning
- New courses:
 - *Workplace Security Awareness (IS-906)*
 - *Active Shooter: What You Can Do (IS-907)*



“If You See Something, Say Something™”

- Campaign is a simple and effective program to raise public awareness of indicators of terrorism, crime, and other threats, and emphasize the importance of reporting suspicious activity to law enforcement authorities
- DHS continues to expand its national “If You See Something, Say Something™” campaign integrating this effort with the Nationwide Suspicious Activity Reporting Initiative
- DHS is developing an innovative community-oriented policing curriculum for State and local law enforcement, focused on better enabling frontline personnel to distinguish between potential criminal and legal activities




Did you **SEE** something wrong while commuting on the train?


Then **SAY** something to local authorities to make it right.

Report suspicious activity.
Call Amtrak Police at
1-800-331-0008.

if you
SEE
something
SAY
something



Transportation
Security
Administration



“If You See Something, Say Something™”



if you
SEE
something
SAY
something™

Did you **SEE** something suspicious in or around the hotel?
Then **SAY** something to make it right.

Report suspicious activity to your supervisor.



www.ahla.com



if you
SEE
something
SAY
something™

Did you **SEE** something suspicious in or around the hotel?
Then **SAY** something to make it right.

Report suspicious activity to your supervisor.



www.ahla.com



if you
SEE
something
SAY
something™

Did you **SEE** something suspicious in or around the hotel?
Then **SAY** something to make it right.

Report suspicious activity to your supervisor.



www.ahla.com



if you
SEE
something
SAY
something™

Did you **SEE** something suspicious in or around the hotel?
Then **SAY** something to make it right.

Report suspicious activity to your supervisor.



www.ahla.com



if you
SEE
something
SAY
something™

Did you **SEE** something suspicious in or around the hotel?
Then **SAY** something to make it right.

Report suspicious activity to your supervisor.



www.ahla.com

Training & Resources Web Site



- **Active Shooter – How to Respond Materials**
 - Poster
 - Booklet
 - Wallet Card
- **Videos**
 - *Check It!*
 - *No Reservations: Suspicious Behavior in Hotels*
 - *What's in Store: Ordinary People/Extraordinary Events*
- **Webinar**
 - IED Threat Awareness and Detection
 - Surveillance Detection
- **And more...**
- For more, visit: <http://www.dhs.gov/cfsector> or e-mail cfsteam@hq.dhs.gov



Homeland Security

For more information, visit:

www.dhs.gov/cfsector

Bill Schweigart

Program Analyst, Commercial Facilities Sector-Specific Agency

(703) 603-5148 | Bill.Schweigart@dhs.gov